

Thank you for your valued interest in our school.

This booklet contains essential and necessary information that you need to know about our school.

If you wish to enrol your child in our school, please fill in the application form and send it to the respective school. Please refer to p12 for the payment information.

EIKOKU MAEDA GAKUEN

• • • 6 Hendon Avenue, Finchley, London, N3 1UE, U.K.  
 Tel: +44-(0) 20-8343-2191  
 website: [www.maedagroup.co.uk](http://www.maedagroup.co.uk)  
 Facebook: [www.facebook.com/maedagakuen](http://www.facebook.com/maedagakuen)

|   |  |
|---|--|
| <p>Finchley Yochien &amp; School office</p> <ul style="list-style-type: none"> <li>• Saturday School for preschool children at Finchley</li> <li>• Japanese lessons for Elementary School children at Finchley</li> <li>• Kids' Abacus Academy</li> <li>• Star Programming School</li> </ul>  | <p>6 Hendon Avenue, Finchley, London N3 1UE<br/>                 Tel: 020-8343-2191<br/> <a href="mailto:admin@maedagroup.co.uk">admin@maedagroup.co.uk</a></p> <p><a href="mailto:support@maedagroup.co.uk">support@maedagroup.co.uk</a> (Abacus/programming)</p>   |
| <p>Acton Yochien &amp; School office</p> <ul style="list-style-type: none"> <li>• Saturday School for preschool children at Acton</li> <li>• Japanese lessons for Elementary School children at Acton</li> <li>• L JJ Football Club Office &amp; Ground</li> <li>• Kids' Abacus Academy</li> <li>• Star Programming School</li> </ul> | <p>Queens Drive Playing Field, Queens Drive, Acton, London W3 0HT<br/>                 Tel: 020-8896-9696<br/> <a href="mailto:info@maedagroup.co.uk">info@maedagroup.co.uk</a><br/> <a href="mailto:ljj@maedagroup.co.uk">ljj@maedagroup.co.uk</a> (LJJFC)</p> <p><a href="mailto:support@maedagroup.co.uk">support@maedagroup.co.uk</a> (Abacus/programming)</p> |
| <p>Brighton Language College (BLC)<br/>                 (English language school)</p>   | <p>5-7 Old Steine, Brighton BN1 1EJ<br/>                 Tel: 01273-647370 Fax: 01273-693606<br/> <a href="http://www.brightonlc.co.uk">www.brightonlc.co.uk</a></p>   |

**Table of contents**

©Summary of Maeda Gakuen . . . . . P1  
 ©Acton Yochien, Finchley Yochien . . . . . P 2-6  
 ©Saturday School for Preschool children . . . . . P 7  
 ©Football club . . . . . P 8  
 ©Kids' Abacus Academy . . . . . P 9  
 ©Japanese lessons for Elementary School children . . . . . P10  
 ©Star programming school . . . . . P11  
 ©How to apply . . . . . P12  
 Application form (2 sheets)

# Summary of Eikoku Maeda Gakuen

## ○ History of our school and our educational policy

In 1993, Maeda Gakuen opened its door to the preschool children of the Japanese families living in the UK as the first Japanese full-day private nursery school which is approved by the British Ministry of Education, in order to meet the needs of the growing Japanese community in the UK. As an educational goal, we set up a comprehensive educational system that balances the trinity of knowledge, emotions, and body, under which we aim to combine the Japanese educational guidelines of kindergarten education and EYFS (Early Years Foundation Stage) in the UK for early childhood education. In addition to developing important capabilities such as early childhood language skills, communication skills, expressiveness, adaptability and physical development of children, which are valued in Japan, we have the British head teacher in our team who has introduced early mathematical learning which is emphasised under the British education system, as well as promoting the understanding of the diversity in the society. While actively incorporating elements that are required in the British education system, we cherish events unique to Japan such as entrance ceremonies, graduation ceremonies, sports day, presentations, kendo, tea ceremonies, abacus etc. to preserve the traditions of Japan. We also strive to build the children's interest in numbers. In addition, parents and children are encouraged to borrow books from our libraries located in the two schools, in which we have approximately 2500 books in total. As a Japanese nursery school, we believe that acquiring the Japanese language as a mother tongue is the foundation of learning. We have also created an environment where children are taught by a native English teacher in a fun way to help them to grow up to be global citizens. Furthermore, we offer ICT lessons using equipment such as PCs for efficient learning.

UK Ministry of Education Approved Nursery School  
Acton · Finchley Yochien

To increase physical strength, as well as to prevent injuries and disease caused by lack of exercise for children who live in the UK where winter lasts for a long time, we have a full time PE teacher who assists children to develop fitness and encourage them to make the most of our spacious school playing field. We pride ourselves on providing safe and nurturing environment blessed with rich natural surroundings. We hope children develop a foundation for life to grow up to be global citizens for the 21<sup>st</sup> century.

Katsutoshi Maeda  
Chairman  
Eikoku Maeda Gakuen

# ACTON · FINCHLEY

## ◇OUR AIM◇

- **Children who can adapt to different environment**
- **Happy and sensitive children**
- **Healthy and lively children**
- **Kind and thoughtful children**

## ◇Nursery school (nursery · reception · year 1) Education◇

|   |   |
|---|---|
| <p>Languages (Japanese &amp; English)<br/>We teach Japanese so that children can speak and understand it correctly when they return to Japan. We also have a full time English teacher. Making the most of living in the English-speaking country, there are English lessons and children have access to bilingual resources.</p>   | <p>Traditions and four seasons of Japan<br/>We celebrate traditional festivals, Tanabata, New Year, and seasonal events throughout the year. Children learn the rich Japanese culture through fairy tales, picture books, and picture-story shows as well.</p>  |
| <p>Free play and adult led activities<br/>We provide childcare according to the guidance of Japanese Kindergarten Education as well as OFSTED in the UK (government agency monitoring the standard of education, which conducts inspections regularly). Based on the five areas of “Health, Human Relationship, Environment, Languages, Expression”, we also value free play time to develop each child’s individuality and initiative.</p> | <p>Discipline<br/>As Japan and the UK have different cultures, customs and manners are different as well. Children practice courtesy and manners that they should follow as a Japanese, and acquire good lifestyle habits. Older children have opportunities to practice Kendo (Japanese martial art based on traditional Japanese swordsmanship) and tea ceremony, in which they can straighten their posture and feel calm.</p> |

## ◇ Pre-school (2-year olds) Education◇

We provide childcare in a caring and relaxed environment so that children can bond with the practitioner, which will become a foundation for daily routine.

|                        |  |
|------------------------|--|
| <b>Basic lifestyle</b> | It is an important time to acquire basic lifestyle habits such as diet, toileting, sleeping, dressing, undressing and so on. We support individual children’s needs according to the level of development and growth. Children’s confidence and sense of satisfaction grow and they become motivated to try new things in the environment where they feel safe and content.        |
| <b>Language</b>        | Children’s vocabulary increases at this age. As we speak to them gently using proper Japanese, read them stories, and play role play scenario with them, children learn to enjoy expressing themselves in words, and having conversation with others.  |
| <b>Play</b>            | We allocate plenty of time for free play in which they engage in the activities that they choose. Play is a vital part for the development because through play, they develop emotional stability and creativity. In the homely atmosphere that we have created, they can play with peers and practitioners, exploring various kinds of toys, learning to communicate with others. |

Taking advantage of the natural and beautiful environment that the school is blessed with, we provide childcare for 2 year olds with a prospect of the following 3 years. We have a curriculum that runs through the next 36 months, along with the teaching plan that is appropriate for each age group.

Children thrive in the environment where they feel at home and when playing with peers of the same age. We also value opportunities in which children of different ages can interact with each other. They may feel inspired by older children, or learn to help and care for younger children, which help them to grow up to be an individual who can understand how others feel.

## ACTON YOCHIEN • FINCHLEY YOCHIEN

---



Please entrust us with the care of your child because it's the important stage of the development

We are a Japanese kindergarten approved by the UK Department of Education. Our school calendar is filled with traditional Japanese events while incorporating merits of British education.

**All our class teachers are qualified as kindergarten teacher or/and nursery practitioner in Japan.** The head teacher, deputy head teacher, and all the staff, who are youthful and enthusiastic work together to provide high quality care and learning for children.

**Fun events** include sports day, summer festival, potato harvesting, Halloween party, Christmas show, etc

**The school bus (Finchley only)** operates with our staff on board. Please contact the school office for detail.

**Japanese-style meals** are served three times a week (Monday, Tuesday and Wednesday). If you wish your child to have school lunch, please contact the school office for detail. We provide mineral water throughout the day (barley water at lunch time), and also have milk time.

**Physical Education** includes activities such as 'the iron bars', 'football', 'the obstacle boxes', 'mat exercise', 'skipping rope', etc. It is vital for later life for children to build physical fitness and acquire flexibility from the early childhood. Physical Education also plays vital role for nurturing healthy mental development.

The first step in the **English conversation** for children is familiarising themselves with the language. Acquiring the correct pronunciation and accent will be a great asset when they return home.

In the **library**, we have a wide range of Japanese picture books which include traditional Japanese folk stories as well as the well-known Western fairy tales. Both English and Japanese books are displayed and organised for different age groups. We introduce books that we recommend for each age group.

**ICT for children that meet the needs of the times**

Children enjoy learning with a variety of software, like playing games, with PC and tablet equipped in each classroom, with which children can prepare themselves to move up to the primary school. We use tablets during the English lessons. An electric blackboard has been introduced in Acton.

During **tea ceremony**, children sit on tatami, with calm mind and good posture. They experience a taste of Wabi-Sabi.



## ACTON YOCHIEN • FINCHLEY YOCHIEN

---

---

### After school activities for the full-day nursery school

#### **Gymnastics club (reception and above)**

For children, it's important to think for themselves and move their bodies rather than being instructed what to do when exercising. For example, playing tag is one of the best plays for children in terms of use of the mind and brain at the same time, as they desperately run around to try not get caught. We aim to assist children's healthy growth by encouraging them to discover the joy of exercising. A letter that contains detailed information will be sent out each term.

#### **Football club "Wanpaku strikers" (reception and above)**

Children can join the London Japanese Junior Football Club (LJJFC) run by the school and participate in the weekly practice sessions at Finchley and Acton Yochien grounds. (see p8)

#### **Abacus lessons (Year 1 and above in Acton)**

We have started the abacus lesson which has been drawing attention recently. We run lessons in the way which children can familiarise themselves with abacus while having fun. A letter that contains detailed information will be sent out each term.

#### **Enjoy English (reception and above)**

To meet the request that children want to learn to speak and sing in English in a fun environment, 'Enjoy English' lessons have been introduced. We aim that children get familiar with English through more listening and speaking. Details will be announced in each term.

#### **After school care (nursery and above)**

We provide after school care to support busy parents. Details (date / time /cost) will be announced by letter in each term.

#### **Maths Master course (Year 1 and above)**

Year 1 children can choose to start arithmetic lessons a year in advance. They learn the concept of numbers, addition and subtraction, shapes, how to read time, length and area. Details (date, time, cost) will be announced by letter in each term.

#### **Junior programming course (Year 1 and above Starts in May 2019)**

Star Programming School in Japan has opened its London branch at Eikoku Maeda Gakuen. We teach programming using simple programming software designed for young children. Students will learn to code and create games and animations on iPad. They will then proceed to learn programming to control a robot.

[www.star-programming-school.com](http://www.star-programming-school.com)

### Other activities

#### **We have a range of lessons/clubs open for the general public**

##### **Football club**

© Acton Yochien ground (see page 8)

##### **English school BLC (Brighton Language College)**

© General English (General English, Business English, IELTS course, individual lesson etc)

© Summer Camp

##### **Western Art History course**

©Held in Tuesdays at Finchley

## ACTON YOCHIEN • FINCHLEY YOCHIEN

|                  |                      | Finchley Yochien                                 |           |         |            |                               | Acton Yochien                 |           |                                     |            |            |  |
|------------------|----------------------|--|-----------|---------|------------|-------------------------------|-------------------------------|-----------|-------------------------------------|------------|------------|--|
|                  |                      | Full day   |           |         |            | Half day                      | Full day                      |           |                                     |            | Half day   |  |
|                  |                      | Y1   | Reception | Nursery | Pre school | Pre school                    | Y1                            | Reception | Nursery                             | Pre school | Pre school |  |
| Fees             | 1 <sup>st</sup> term | £ 3,340  | £ 3,270   | £ 3,270 | £ 3,280    | £ 2,310                       | £ 3,415                       | £ 3,345   | £ 3,345                             | £ 3,360    | £ 2,400    |  |
|                  | 2 <sup>nd</sup> term |  |           |         |            |                               |                               |           |                                     |            |            |  |
|                  | 3 <sup>rd</sup> term | £ 3,025  | £ 3,025   | £ 3,025 | £ 3,105    | £ 2,200                       | £ 3,100                       | £ 3,100   | £ 3,100                             | £ 3,190    | £ 2,280    |  |
| Time             |                      | 9:15~15:00                                       |           |         |            | 9:15~12:45                    | 9:00~14:45                    |           |                                     |            | 9:00~12:45 |  |
| School lunch     |                      | £ 145- (1 <sup>st</sup> term)                    |           |         |            | £ 160- (2 <sup>nd</sup> term) | £ 150- (3 <sup>rd</sup> term) |           |                                     |            |            |  |
| Registration fee |                      | £ 50- (enrolment can be postponed up to 3 times) |           |         |            | Entrance fee                  | £ 500-                        | uniform   | £ 45-(nursery • reception • Year 1) |            |            |  |

- ※ School fees are payable termly 1<sup>st</sup> term April~July, 2<sup>nd</sup> term September~December, 3<sup>rd</sup> term January~March)
- ※ School fees include school trips (Year 1).
- ※ Half day can be opted in only in the first term after starting the school. For half day, children go home after lunch.
- ※ Please refer to page 12 for payment detail.
- ※ School fees can be paid in instalments. (Please contact the school office. )
- ※ If you have more than 1 child in the full time school, sibling discount will be applied to the enrollment fee.
  - ※Age for the preschool class : Children born between 2 April 2016 and 1 April 2017.  
If there is a place available, children born between 2 April 2017 and 15 March 2018 and already had the 2<sup>nd</sup> birthday can start in September. Please contact the school office for more details. Priority is given to older children.

※ The registration fee will not be refunded for any reasons.

### Term Dates 2019

|        | Term                                 | Half Term                   |
|--------|--------------------------------------|-----------------------------|
| Term 1 | (Tue) 16 Apr – (Thu) 18 Jul          | (Mon) 27 May – (Wed) 29 May |
| Term 2 | (Tue) 3 Sep – (Thu) 5 Dec            | (Thu) 24 Oct – (Fri) 1 Nov  |
| Term 3 | (Tue) 7 Jan 2020 – (Thu) 26 Mar 2020 | (Mon) 17 February           |

※Entrance ceremony will take place on (Mon) 15 April.

※Dates are subject to change.

### Course Dates

|               |                             |                             |
|---------------|-----------------------------|-----------------------------|
| Summer course | (Mon) 22 Jul– (Fri) 26 Jul  | —                           |
| Autumn course | (Mon) 19 Aug – (Fri) 23 Aug | (Tue) 27 Aug – (Fri) 30 Aug |
| Winter course | (Mon) 9 Dec – (Fri) 13 Dec  | (Mon) 16 Dec – (Fri) 20 Dec |

**These are theme-based courses which are packed with action and fun.**

**The details for these course (fees and themes) will be announced by letters and on our website.**

# Acton Yochien Finchley Yochien Q&A

**Q : What are the commutable areas to the school?**

A : There are Finchley Yochien located in North London which serves postcode N, NW etc and Acton Yochien situated in west London which is commutable from W, NW, SW etc.



**Q : Is there a school bus available?**

A : The school bus operates between NW area and Finchley Yochien (NW3,6, 8, 11). Please contact the school office for more information.

**Q : Is there a PTA ?**

A : We request a few parents to work as class reps in case of emergency who can call the emergency phone tree.  
(Some Year 1 parents volunteer to create yearbook)

**Q : What items should I prepare before my child start the school?**

A : You need to purchase the school uniform (blazer). Other items such as indoor shoes, lunch set (cup, chopsticks, spoon, fork, lunch box, wet cloth), additional bag, school bag are not specified by the school. Items that you already have can be used. Some items including indoor shoes, bag for indoor shoes, lunch box, case for wet cloth, yukata (cotton kimono for summer festival), jinbei (Japanese home wear), smock for arts and crafts, picnic sheet, cloth training pants may not be available in UK.  
※Any shoes purchased in UK can be used if children can easily slip on and off.

**Q : What are the term dates and holidays?**

A : The school operate on a trimester system, which is the same system in Japan. The academic year starts in April and finishes in March. The main holidays are half term in each term, summer holiday, winter holiday, and spring holiday.

**Q : Why is lunch fee not included in the school fees?**

A : School lunch is optional, as increasing number of children suffer from food allergies.  
※ School lunch is served 3 days a week (Mon, Tue, Wed). The menu is sent out monthly.

**Q : Why are there separate fees for short courses?**

A : Our short courses are run separately from the normal courses. We run action packed theme-based courses which children who go to local English schools can participate in.

**Q : How do I make payments?**

A : The school will send an invoice. Once you have received it, please pay by bank transfer by the day before the entrance day (first day). Please contact the school office if you wish to pay in instalments.

**Q : What is the class size?**

A : Our class size are 20-25 pupils depending on which classroom is used.

**Q : Can my child transfer between the schools?**

A : As long as there is a place available, he/she can transfer from one school to another at any time.

## SATURDAY SCHOOL

### Classes for children who attend an English school

Some parents may have concerns about their children's behaviour and language if they go to an English school. Others may welcome the opportunities for their children to experience the Japanese school life. In order to meet such interest and requests, we have opened the Saturday school.

Our Saturday school aims to provide opportunities for children to familiarise themselves with Japanese language and culture through learning and playing. Taking account of the environment and ability of Japanese language of the individual children, we run lessons where children can build confidence in Japanese while having fun.

We teach children the four fundamentals of Japanese, which are reading, writing, speaking, and listening. In addition to the basic teaching materials, we also use our original resources to suit the ability of each child.

In addition, we introduce Japanese children's songs, and seasonal events as well as offering opportunities to experience Japanese culture such as calligraphy and tea ceremony. Children also enjoy playing in our spacious school grounds during short PE lessons/play, and reading quietly in the library (books are available to borrow). Once your child has completed the Year 1 class, he/she can proceed to the Saturday Elementary school class to continue learning. Please make an appointment if you would like to visit our Saturday Elementary school class.

- **Time**                    9 : 0 0 ~ 1 2 : 0 0
- **Registration fee**    £ 3 5 (enrolment can be postponed up to 3 times)  
Registration fee is non-refundable for any reason.
- **Enrolment fee**        £ 1 2 0
- **Payment method**    Please refer to p12.
- **Age**                     Nursery, Reception and Year 1  
(Born between 2 April 2013 and 1 April 2016)
- **Fees**

| Term   | Fees  |
|--------|-------|
| Term 1 | £ 440 |
| Term 2 | £ 440 |
| Term 3 | £ 330 |

**Annual and seasonal events** include Girls festival, Children's Day, Mother's Day, Father's Day, Tanabata, Summer Festival, Christmas, Traditional children's games in New Year, etc.

| Term          | Term 1  | Term 2  | Term 3  |
|---------------|---|---|---|
| Dates         | 13 Apr ~ 13 July  | 7 Sep ~ 7 Dec   | 11 Jan ~ 21 Mar 2020  |
| School Closed | Easter                    20 Apr<br>The full time school<br>Sports day                22 June | Half term                26 Oct<br>The full time school<br>Christmas show        30 Nov | Half term                15 Feb<br>The full time school<br>Graduation Day        14 Mar |

Please contact and send the registration form to

Acton School    . . . Queens Drive Playing Field, Queens Drive, Acton, W3 0HT  
Tel 020-8896-9696

Finchley School . . . 6 Hendon Avenue, Finchley, N3 1UE  
Tel 020 - 8343 - 2191



## FOOTBALL CLUBS

### LONDON JAPANESE JUNIOR FOOTBALL CLUB (LJJFC)

This year, "London Japanese Junior Football" Club marks the 26th year as the first Japanese junior football club in the UK which is the birthplace of football. Currently, more than 100 boys and girls train in 3 grass football pitches in Acton Yochien and grounds of Finchley Yochien. Since 2010, the club has formed an alliance with Chelsea F.C., one of the top teams of the premier league. Both coaches from Chelsea and our qualified Japanese coaches work together to improve the player's skill level. We also work in partnership with the top football academy in Croatia, and our players can take part in overseas tours, homestays and camps in UK. We have enjoyed the wonderful result recently, such as the European Japanese Football Tournament held in Germany, where our U8 won the cup in 2015, and 2016, and U8 and U10 were runners up in 2017. Our teams actively involved with local junior teams, and participate in the official league in which they play more than 20 matches during the year. Our players enjoy playing football in the UK where football originates, as well as playing overseas under the guidance of foreign coaches. Children who are not only motivated and competitive in football, but also behave as a role model in day to day life to others can participate in the Academy classes, and may be able to obtain scholarships which exempt or reduce fees.

In addition, our senior football team "Football club Acton Sun" which was formed mainly by the parents of LJJFC, "LJJ Dandies" are as passionate as our junior players about football and have committed themselves to training and matches. Football is one of the best sports to improve fitness and develop a spirit of team work especially in UK where winter lasts for a long time.

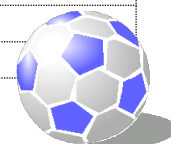
([www.ljjfootball.co.uk](http://www.ljjfootball.co.uk))

#### LJJFC SUMMARY

|                              |  |  |   |
|------------------------------|--|--|---|
| <b>Club name</b>             | London Japanese Junior Football Club (LJJFC)   |  |   |
| <b>Team nickname</b>         | LJJ • Frontiers  |  |   |
| <b>Office</b>                | Eikoku Maeda Gakuen Finchley Yochien   |  |   |
| <b>Board members</b>         | Chairman : Katsutoshi Maeda Coach: Yoshiteru Mizuno  |  |   |
| <b>Age</b>                   | 1st grade in elementary school (age 6-7) - 15 years old (as of 1 <sup>st</sup> February 2019)<br>※4-6 year olds (Wanpaku strikers /4-5 year olds : Monday, 5-6 year olds : Wednesday, 4-6 year olds : Friday and Sunday)   |  |   |
| <b>Regular training days</b> | <ul style="list-style-type: none"> <li>• Tue • Wed • Fri : 4:30 – 6:00pm Sat: 1:30 – 3:00pm</li> <li>• Sun : 10:30am~12:30pm      • 4-5 year olds Mon : 3:00~3:45pm</li> <li>• 5-6 year olds Wed:3:15~4:15pm      • 4-5 year olds Fri : 3:00 – 4:00pm</li> </ul> |  |   |
| <b>Training venue</b>        | Grounds of Eikoku Maeda Gakuen Acton Yochien (4-6 year olds Friday in Finchley Yochien)  |  |   |
| <b>Fees</b>                  | Enrolment fees   | £ 50 ( £ 30 for second child or more ) Please pay by bank transfer after submitting the enrolment form |   |
|                              | Termly fees (3 months)   | Wed • Fr • Sat   | £ 70      Tuesday Academy course £ 260 (6 months) |
|                              |  | Sun  | £ 85  |
|                              | If you enrol in the middle of the course, the initial membership fee will be divided by the month. However, please note in case you withdraw from the course half way through the term, you are required to pay for the full term. No refund will be made.       |  |   |
| <b>Withdrawal</b>            | Please report to the club with the reason why you are withdrawing.<br>If you do not attend for 2 terms without notification of absence, your membership is automatically cancelled.  |  |   |
| <b>Indemnity</b>             | The club and staff are not responsible for any accidents, illnesses or injuries that occurred during training, in transit for games, etc. A student (parent) who wishes to join the club should sign the consent form when submitting the application form.      |  |   |
| <b>Contact address</b>       | London Japanese Junior Football Club (LJJ FC)<br>Queens Drive Playing Field, Queens Drive, Acton, London W3 0HT  |  |   |
| <b>Payment method</b>        | Please refer to page 12. (Receipt can be issued upon request)  |  |   |
| <b>Leave of absence</b>      | You can take leave of absence while you paid for facility maintenance fees. Please submit the letter of absence.   |  |   |
| <b>Others</b>                | Uniform set (1 shirt for home • 1 shirts for away 2 pairs of shorts) £ 65 (the price is subject to change)   |  |   |

#### Summary for the football club for parents, members of the general public, secondary school students

|                       |   |   |                           |
|-----------------------|---|---|---------------------------|
| <b>Club name</b>      | Football Club Acton Sun (advanced)                        | LJJ Dandies (beginners)                                   |                           |
| <b>Eligibility</b>    | Parents of our school • LJJ/Members of the general public | Parents of our school • LJJ/Members of the general public | Secondary school students |
| <b>Fees</b>           | £ 200/year  | £ 150/year  | Free                      |
| <b>Contact number</b> | LJJFC Office 020-8896-9696                                |   |                           |
| <b>Payment detail</b> | Please refer to p 12.                                     |   |                           |



## KIDS ABACUS ACADEMY

---

---

At Eikoku Maeda Gakuen, we started the abacus class in 2011. Abacus has long been used in Japan as a tool to understand the concept of numbers. As well as to being quicker at calculation, and stronger at mental arithmetic, it helps greatly the development of children as it stimulates both right and left sides of the brain. Abacus is also very helpful in comprehensively understanding numbers. We aim to develop understanding of numbers and teach in the way that's easy to understand for each child.

### Abacus summary

- **Office** Kids abacus academy office (In Eikoku Maeda Gakuen)
- **Age** 5 years old and above
- **Lesson days**

|               |           |                   |
|---------------|-----------|-------------------|
| Swiss Cottage | Tuesday   | 16 : 30 ~ 17 : 30 |
|               | Wednesday | 16 : 00 ~ 17 : 00 |
|               |           | 17 : 00 ~ 18 : 00 |
| Acton         | Thursday  | 14 : 45 ~ 15 : 45 |
|               |           | 16 : 30 ~ 17 : 30 |
|               |           | 17 : 45 ~ 18 : 45 |
|               | Saturday  | 12 : 45 ~ 13 : 45 |
- **Location** Eikoku Maeda Gakuen Acton Yochien/Swiss Cottage Community Centre
- **Term** The course starts on 9<sup>th</sup> April 2019. You can start any time during the term.
- **Fees**
  - Enrolment fee £ 30 (If you are starting in April 2019)
  - Lesson fees £ 175 / 1 term (Depends on how many lessons in the term)  
Fees for 2<sup>nd</sup> and 3<sup>rd</sup> term will be announced in July.
- **Payment method** Please pay on the first day of the term by cash or bank transfer.  
Refer p12 for more information.
- **Withdrawal** Please inform us 4 lessons prior to the withdrawal date. Refund will not be made for the rest of the term.

**Please contact**

**Kids Abacus Academy Office** (Eikoku Maeda Gakuen)  
6 Hendon Avenue, Finchley, London N3 1UE  
Tel : 020-8343-2191

## JAPANESE LESSONS FOR ELEMENTARY SCHOOL CHILDREN

At Eikoku Maeda Gakuen, we have been offering Japanese language classes for elementary school children since 2017.

There are children who may find it difficult to keep up with the lessons in the Japanese Saturday School, and may feel overwhelmed with the amount of home work they are given from the school. Our aim is to support the children to learn Japanese as a second language without much strain and effort.

Children will be taught in a small class of 8-10 pupils by a qualified Japanese language teacher with extensive experience and knowledge in education so that they can build confidence in their Japanese.

We understand that it is a challenge for children who go to an English school to learn Japanese. However, it would be our pleasure if we could assist them to experience the Japanese school life and enjoy talking and playing with friends in Japanese.

- **Time**                                      Saturday 9 : 0 0 ~ 1 2 : 0 0
  
- **Enrolment fee**                            £ 1 5 0
  
- **Tuition fees**                             £ 2 9 0 /term 1    ( 1 2 lessons)  
     £ 2 9 0 /term 2    ( 1 2 lessons)  
     £ 2 2 0 /term 3    ( 9 lessons)
  
- **Payment method**                    Please pay by bank transfer by the first lesson.  
     Refer p12 for more details.
  
- **Age**    Grade 1, 2 & 3 Japanese Elementary school  
     (born between 2<sup>nd</sup> Apr 2010 - 1<sup>st</sup> Apr 2013)
  
- **Japanese ability at enrolment**  
     Children who are still learning reading and writing hiragana  
     (Children will take a test before enrolment)
  
- **Withdrawal**                                When you want to withdraw your child from the course, you need to  
     inform us 4 lessons prior to the withdrawal date. No refund will be made for  
     lessons after withdrawal. If your child is taking a leave for more than 1 month,  
     please let us know.

### Term dates (same as the Saturday school)

| Term          | Term 1  | Term 2  | Term 3  |
|---------------|---|---|---|
| Dates         | 13 Apr ~ 13 July  | 7 Sep ~ 7 Dec   | 11 Jan ~ 21 Mar 2020  |
| School Closed | Easter                                      20 Apr<br>The full time school<br>Sports day                                      22 June | Half term                                      26 Oct<br>The full time school<br>Christmas show                                30 Nov | Half term                                      15 Feb<br>The full time school<br>Graduation Day                                14 Mar |

Please contact

Finchley school   · · · 6 Hendon Avenue, Finchley, N3 1UE

Tel 020 - 8343 - 2191

# STAR PROGRAMMING SCHOOL LONDON BY EIKOKU MAEDA GAKUEN

[www.star-programming-school.com](http://www.star-programming-school.com)

In this course, children will create arithmetic problems, games, and animations on a tablet using a programming language called Scratch Junior (Scratch is designed and maintained by the MIT Media Lab). Children learn mathematical and computational ideas that are built into the Scratch experiences. In the second half of the term, they will have a chance to control SPHERO (the world's first robotic ball). This is an ideal introductory course to the step towards the next level of Scratch programming. During this course, children will not only learn the basics of programming, but also have opportunities to present their work regularly, which will help them develop presentation skills. Prizes will be awarded for excellent works. The award ceremony took place at Tokyo University in 2018. Also, this course was selected to promote programming education for young people for the second year in a row.

|                      |  |
|----------------------|--|
| <b>Venue</b>         | Maeda Gakuen Acton Yochien             |
| <b>Date</b>          | Friday (14:45 – 15:45 / 16:30 – 17:30) |
| <b>Enrolment fee</b> | £50                                    |
| <b>Lesson fees</b>   | £200 (10 lessons in 3 months)          |
| <b>Duration</b>      | 3 months x 4 terms (40 lessons)        |
| <b>Age</b>           | 6 years old and above                  |

Once they finished this course, your child can proceed to the next level listed below.

- 1 Scratch course Children will learn more complex coding using a PC (September 2019)
- 2 Robot course Children will learn how to control a robot (starting in 2020)

## Scratch Junior Course



## Scratch Course



## Robot Course



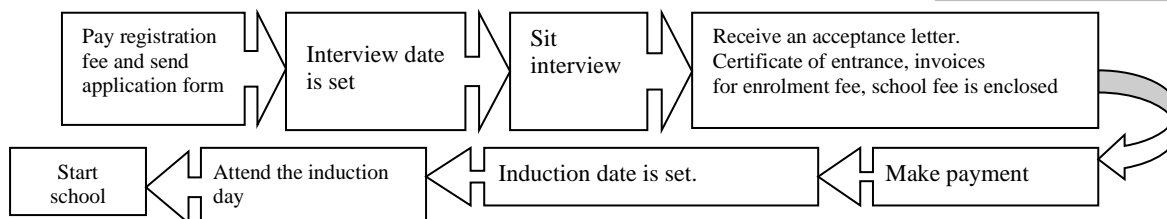
Please contact

Eikoku Maeda Gakuen Acton Yochien : Queens Drive Playing Field, Acton, London W3 0HT

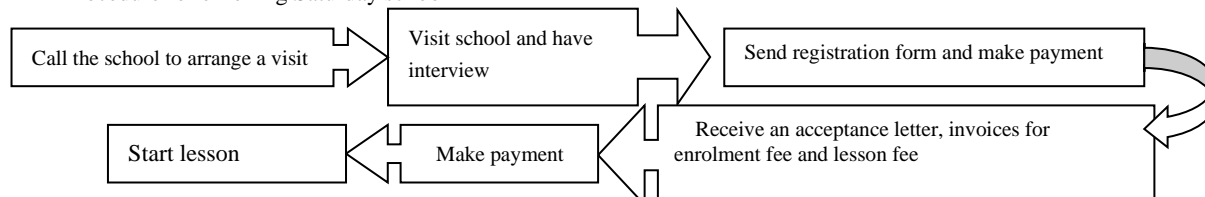
Tel : 020 8343 2191 email : [support@maedagroup.co.uk](mailto:support@maedagroup.co.uk) (Mr Kato)

## PAYMENT DETAILS

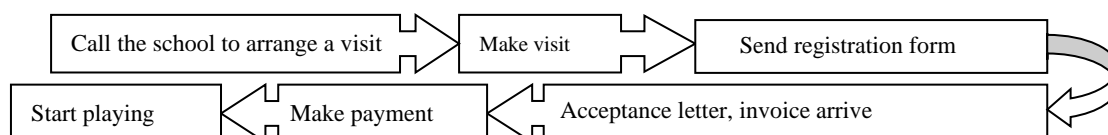
### Procedure for enrolling Acton Yochien & Finchley Yochien



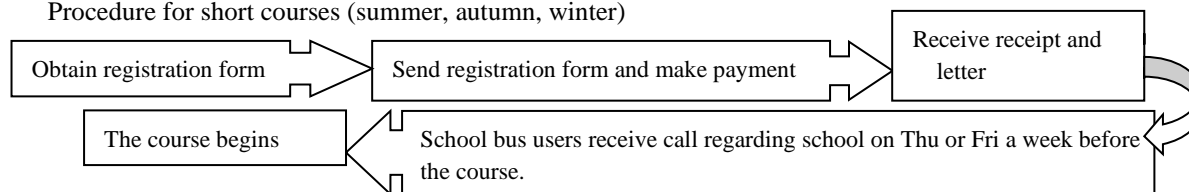
### Procedure for enrolling Saturday school



### Procedure for enrolling LJJ football club



### Procedure for short courses (summer, autumn, winter)



#### For all the courses,

- 1) Please fill in the registration form and send it to the respective school. Payment of the registration fee should be made at the same time by bank transfer.
- 2) Please note that account name and number are different depending on the course you wish to enrol.
- 3) Discount is available when you sign up your child for more than 1 clubs or courses, or siblings sign up at the same time.
- 4) You can start the course at any time as long as there is a place available.
- 5) Please call the school office to arrange a visit. Further information can be obtained from the school office.

#### 【Payment details】

| School/class/course   | Acton Yochien<br>Finchley Yochien   | Saturday school, short courses, after school activities, Abacus lessons, Japanese lessons, Programming course                                | LJJ Football Club   |
|---|---|--|---|
| <b>Bank account</b><br>※Please state your child's name in the reference field | <b>Bank Name:</b> Barclays Bank PLC<br><b>Account Name:</b> Maeda Gakuen Yochien<br><b>Account No:</b> 70605654<br><b>Sort code:</b> 20-29-37 | <b>Bank Name:</b> Barclays Bank PLC<br><b>Account Name:</b> Eikoku Maeda Gakuen<br><b>Account No:</b> 50585793<br><b>Sort code:</b> 20-29-37 | <b>Bank Name:</b> HSBC<br><b>Account Name:</b> LJJ Frontiers Football Club<br><b>Account No:</b> 91165488<br><b>Sort Cord:</b> 40-03-01 |